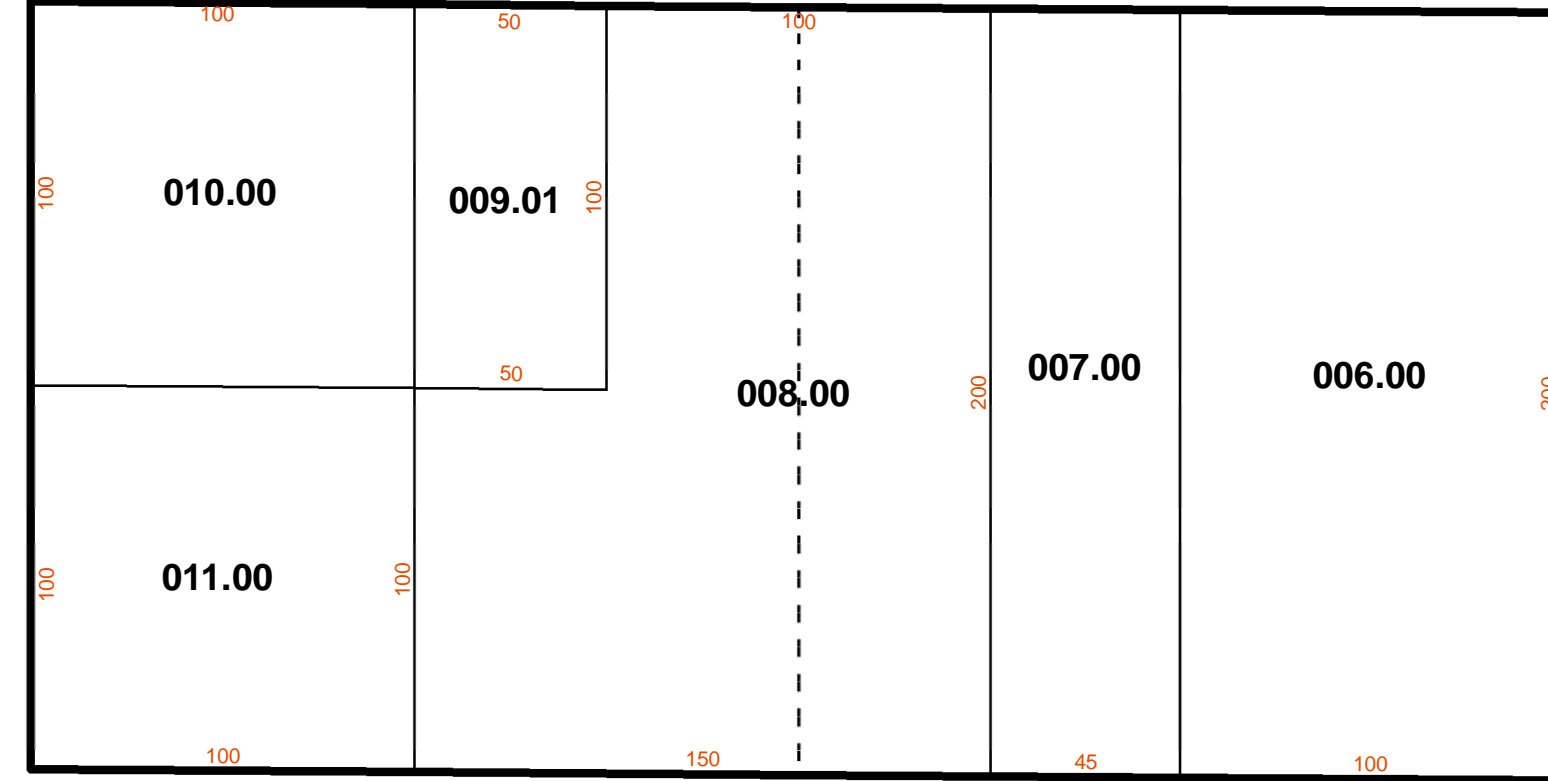


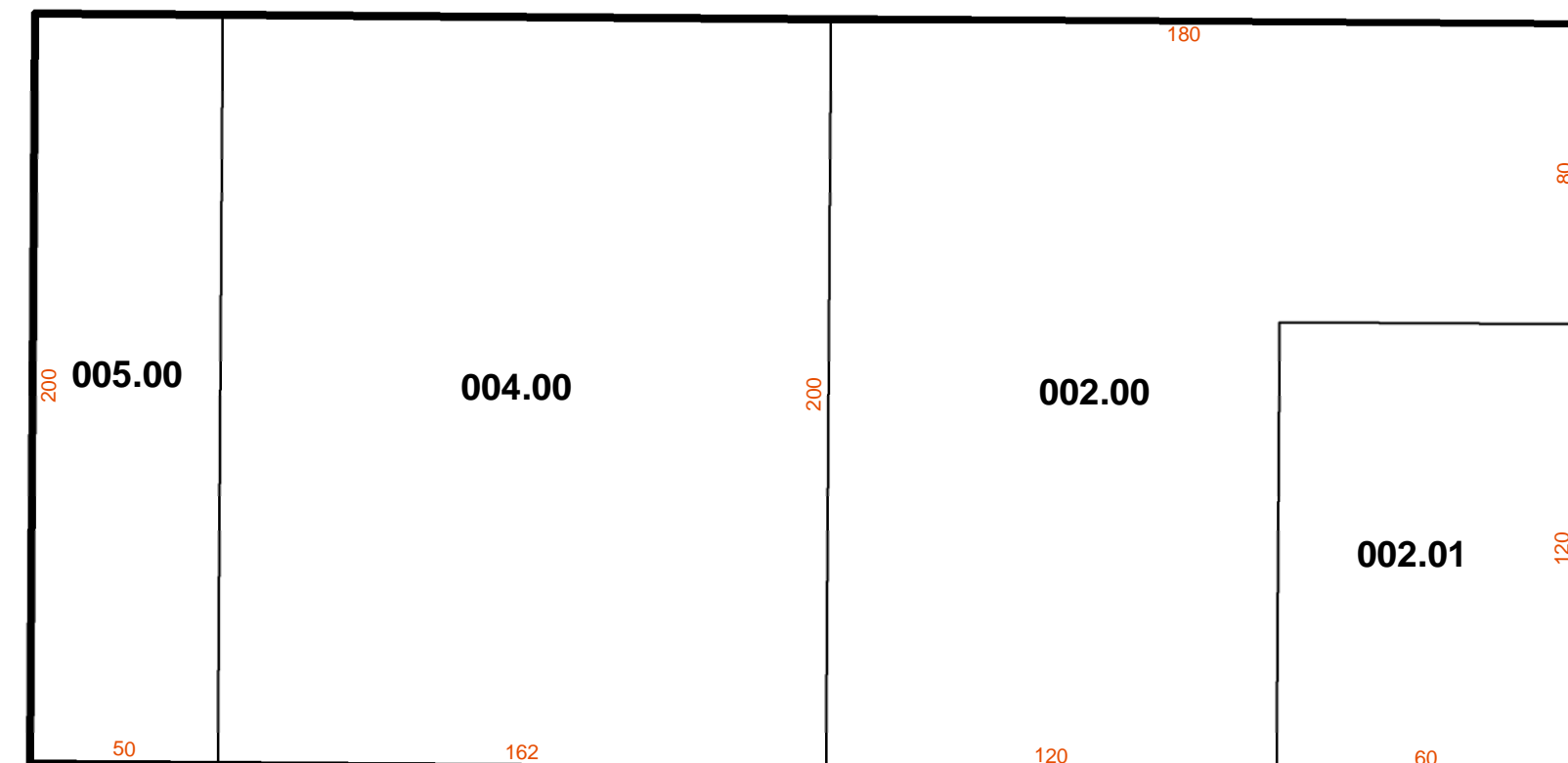
MAP
16.00-01..

MAP 16.00-02..

WATERFORD LN



LIMERICK ST



(BRADLEY ST)

001.00
0.58 AC

PATRICK LN

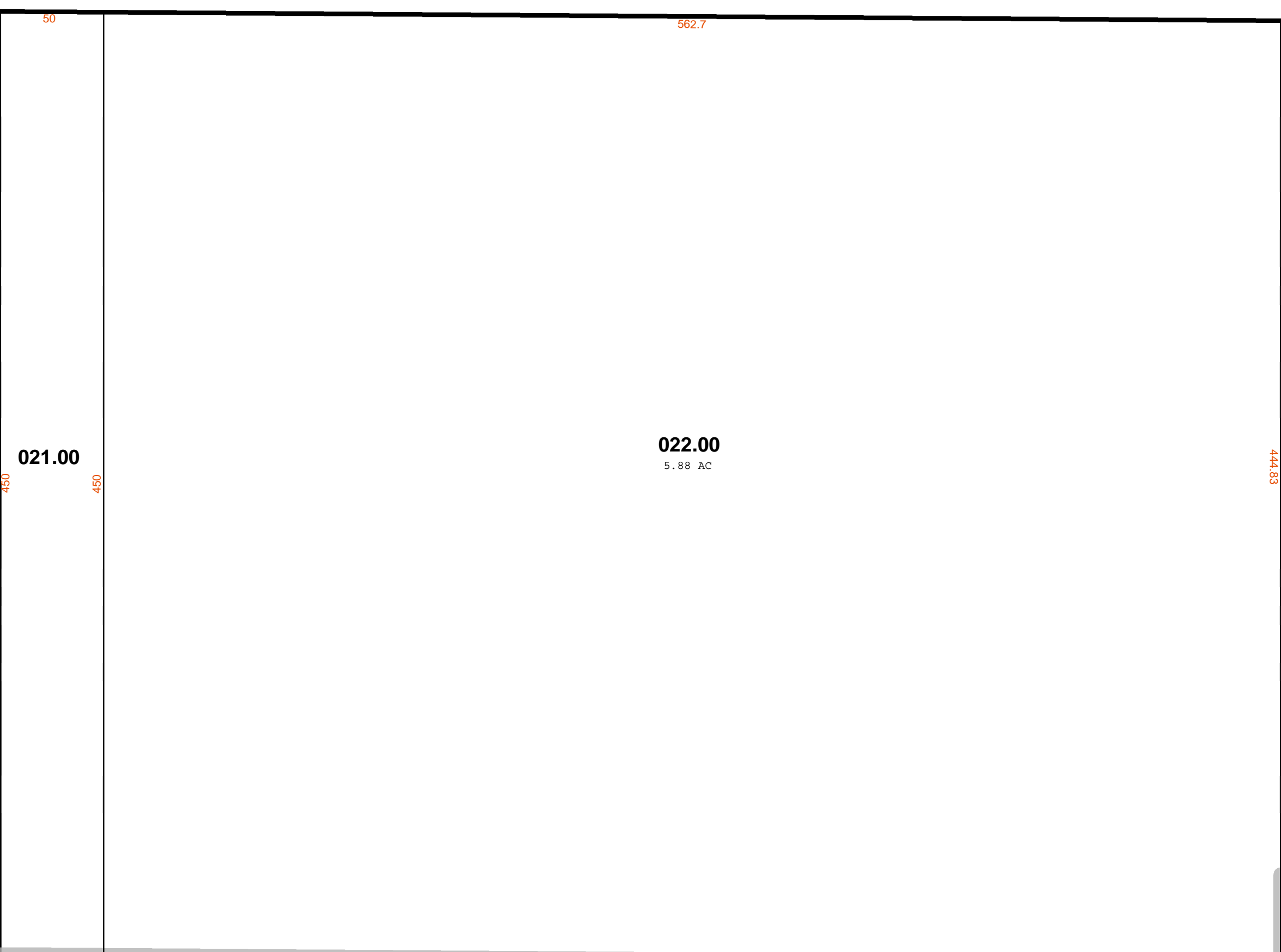
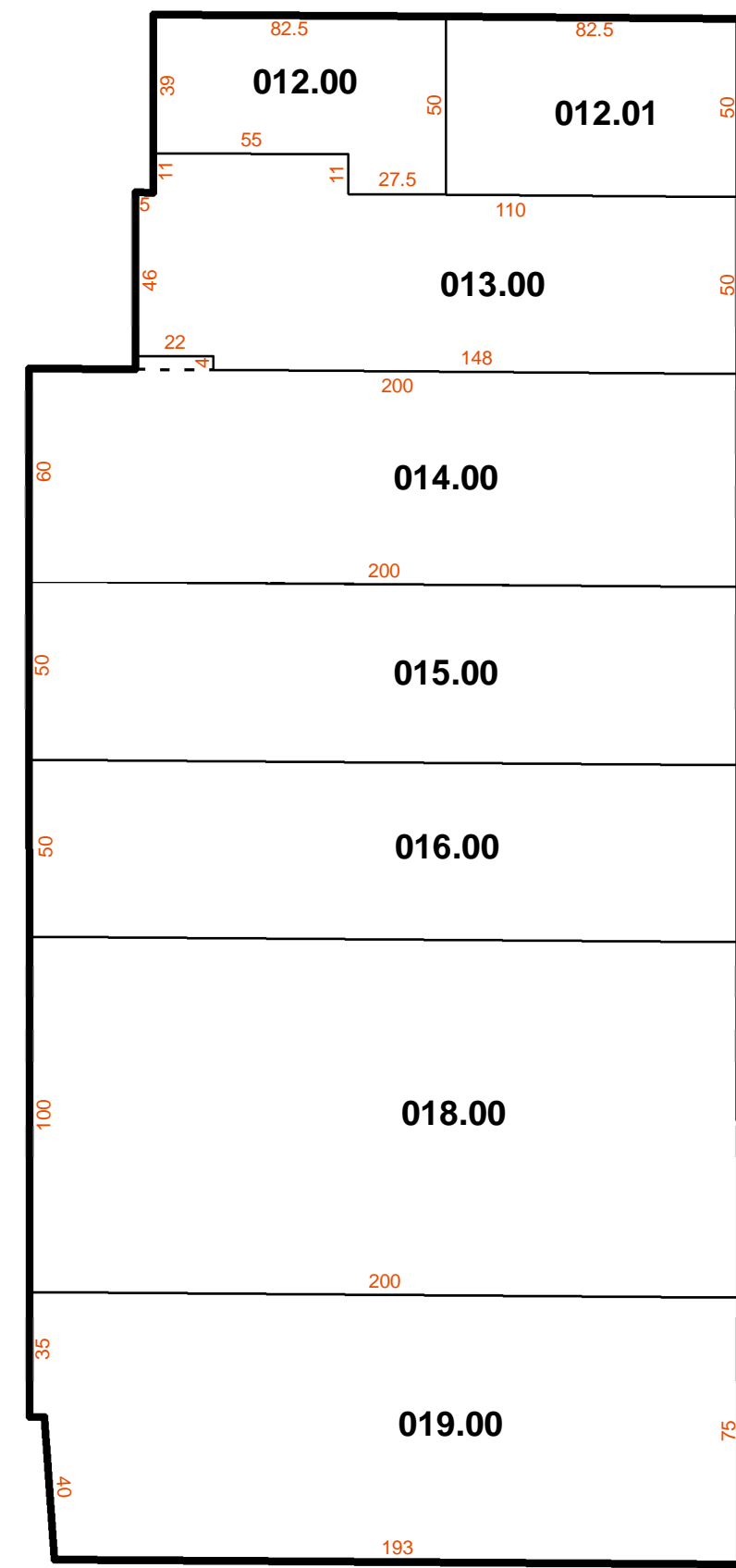
(TRALEE LN)

PATRICK LN

(SOUTH ST)

DUNNINGS HWY

MAP 16.00-04..



024.00
1.25 AC

BLAIR TWP

MAP 04.00-06..

BLAIR TWP

MAP 04.00-06..


ASSESSMENT MAP

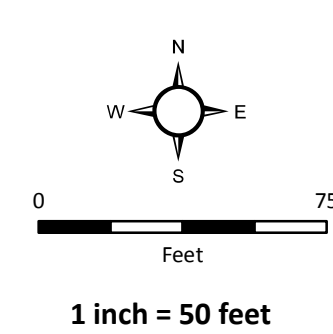
County of Blair
Pennsylvania



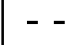


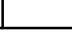
Date Published: 6/24/2019

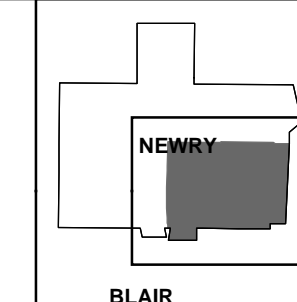
The County makes no guarantee or warranty to its accuracy as to labeling, dimensions, placement or location of any features contained herein. The boundaries depicted by this data are approximate, and are not necessarily accurate to surveying or engineering standards. This data is intended for informational purposes and should not be considered authoritative for engineering, navigational, legal and other site-specific uses.

Presented by:
 Blair County Assessment Office
423 Allegheny St, Suite 041
Hollidaysburg, PA 16648

Prepared by:
 Blair County GIS Department
423 Allegheny St, Suite 011
Hollidaysburg, PA 16648



-  Road ROW
-  Parcel Boundary
-  Lot Lines
-  Easements
-  Municipal Boundary
-  Sheet Parcels



REVISIONS

No.	Date	Description

NEWRY BOROUGH
District: 16.00
Map #: 03
(16.00-03..)