

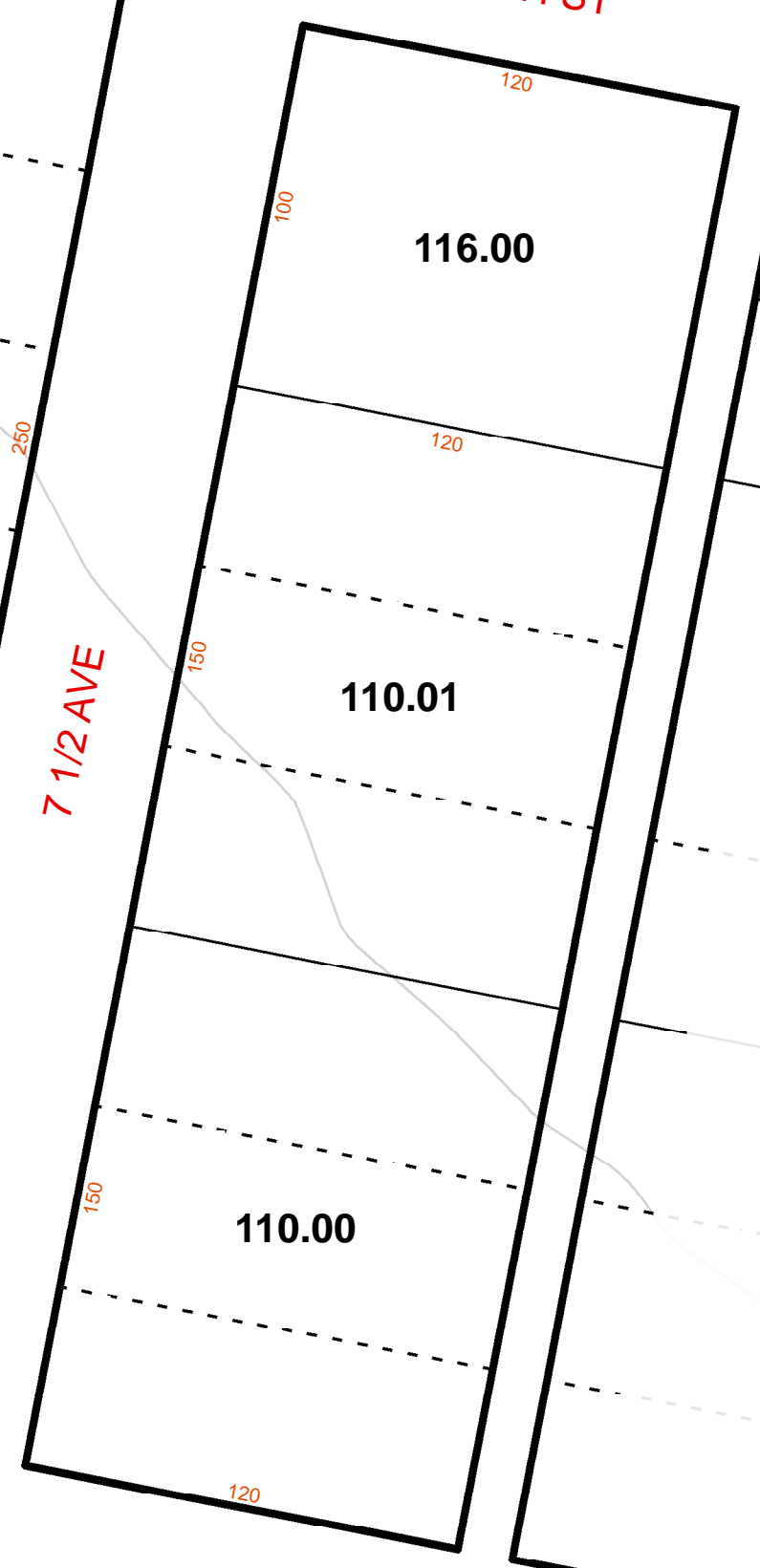
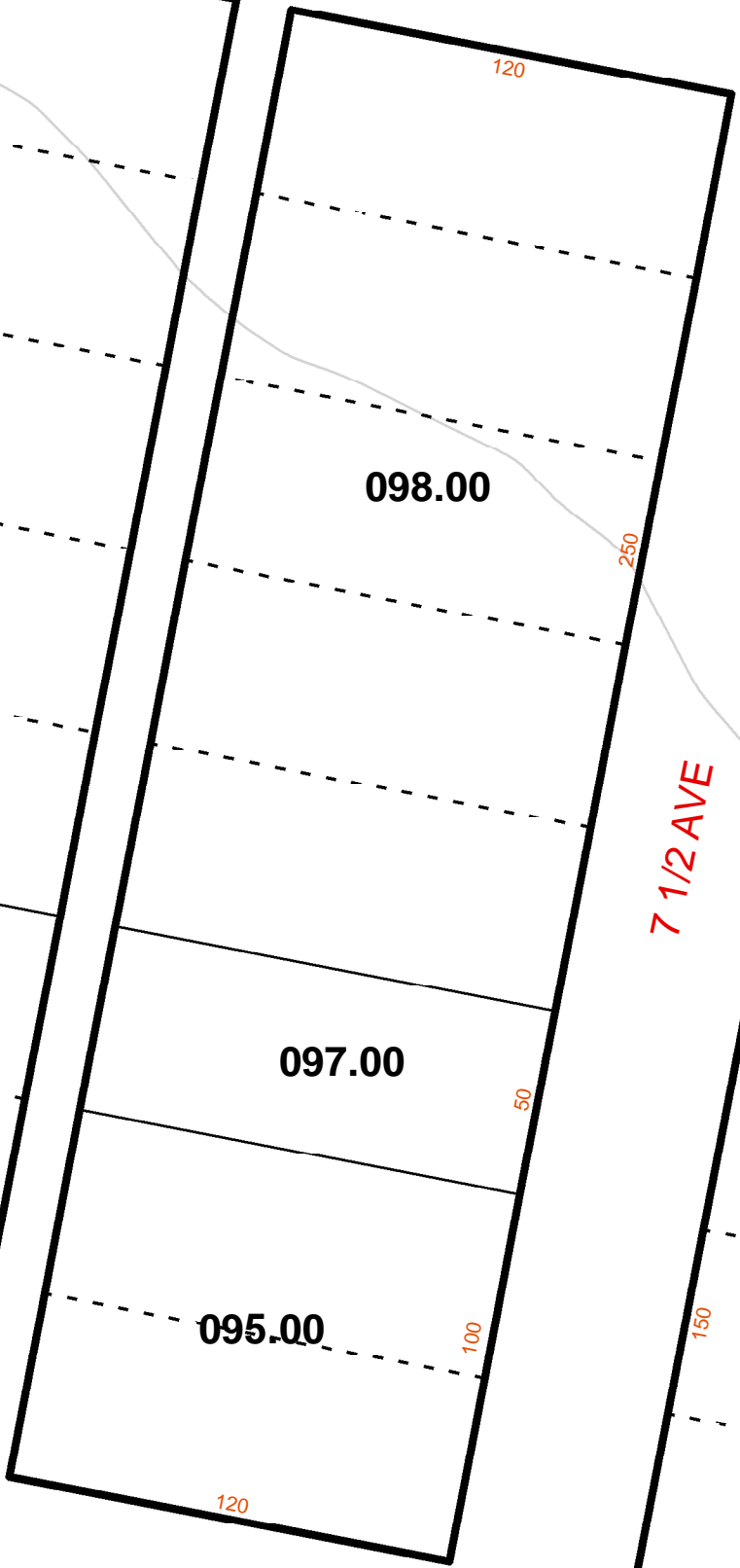
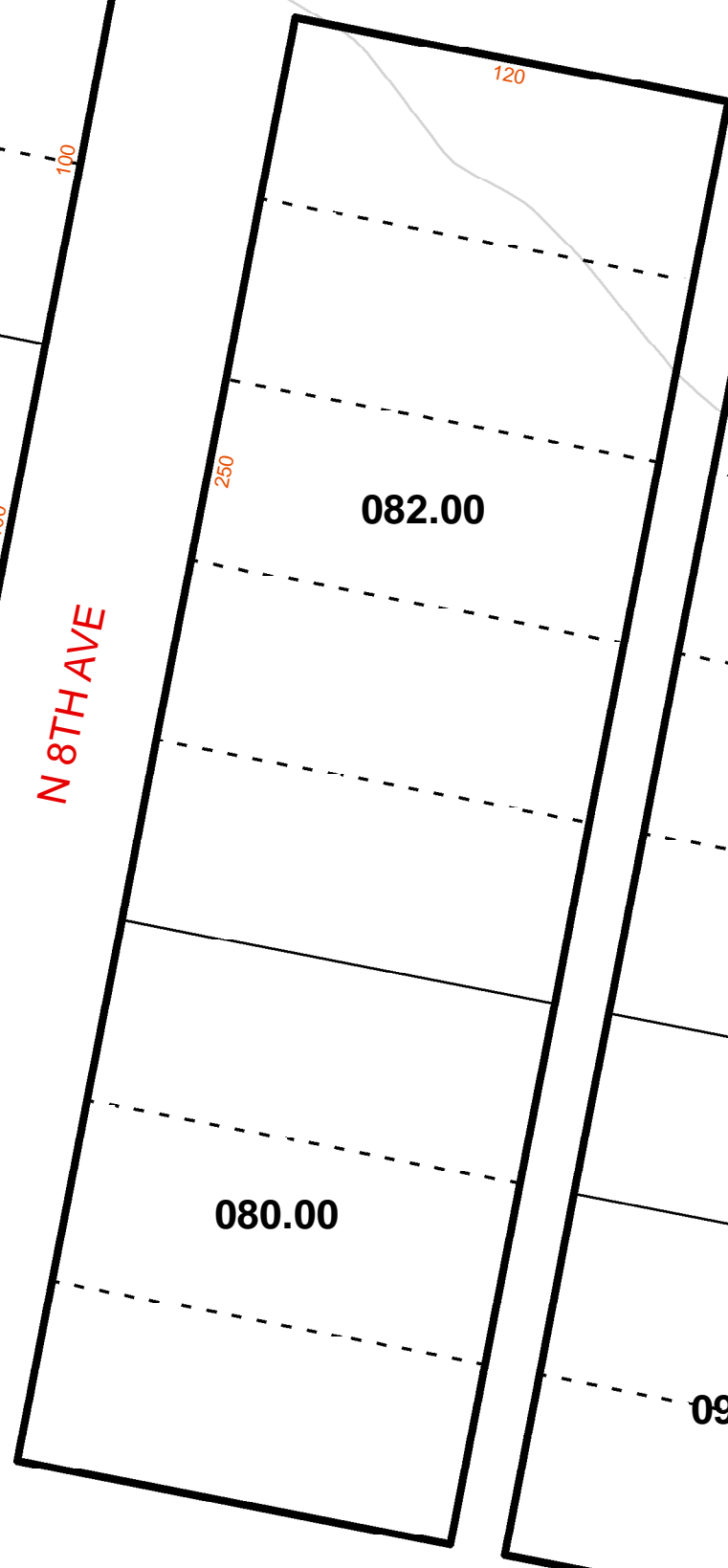
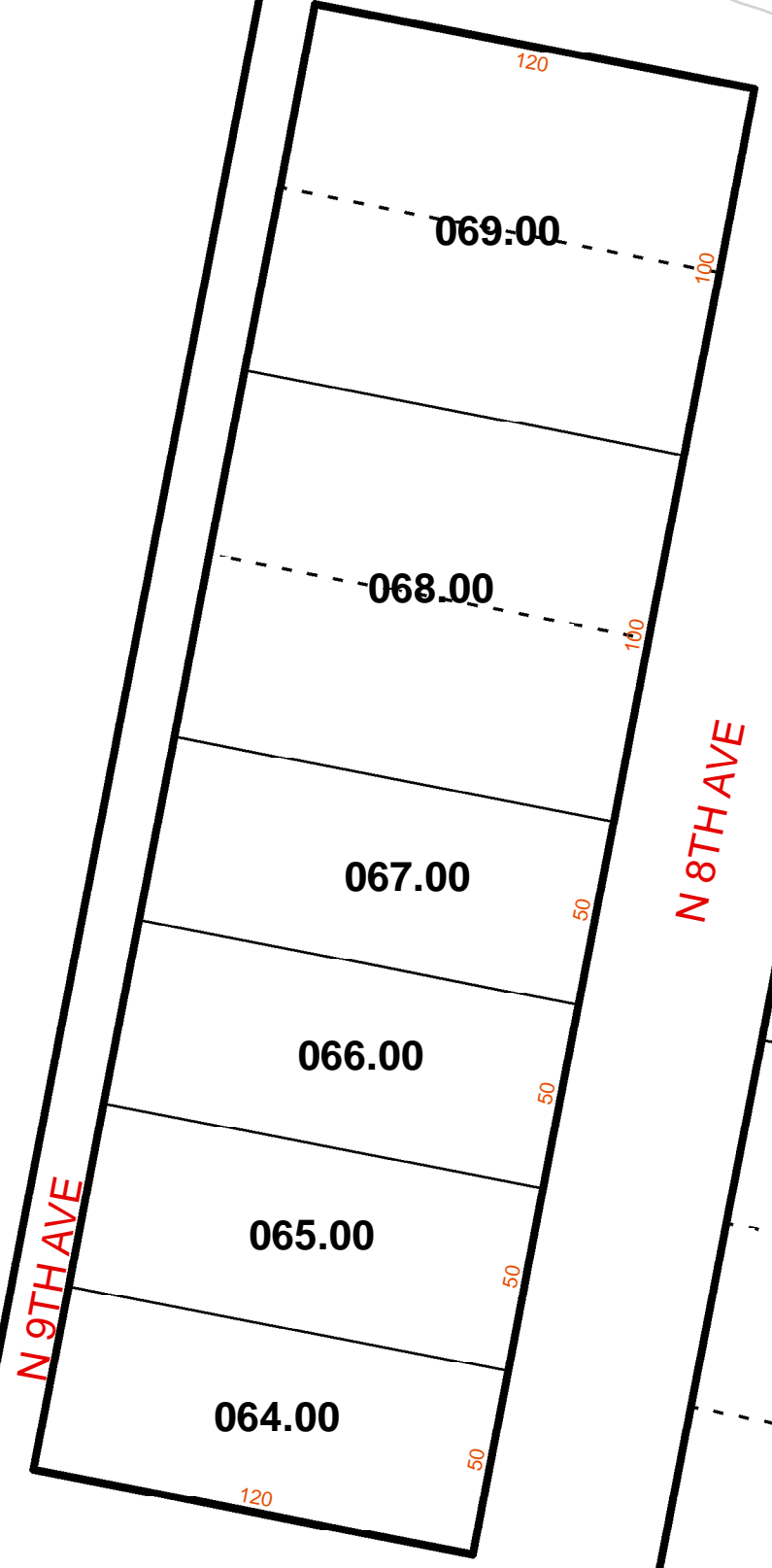
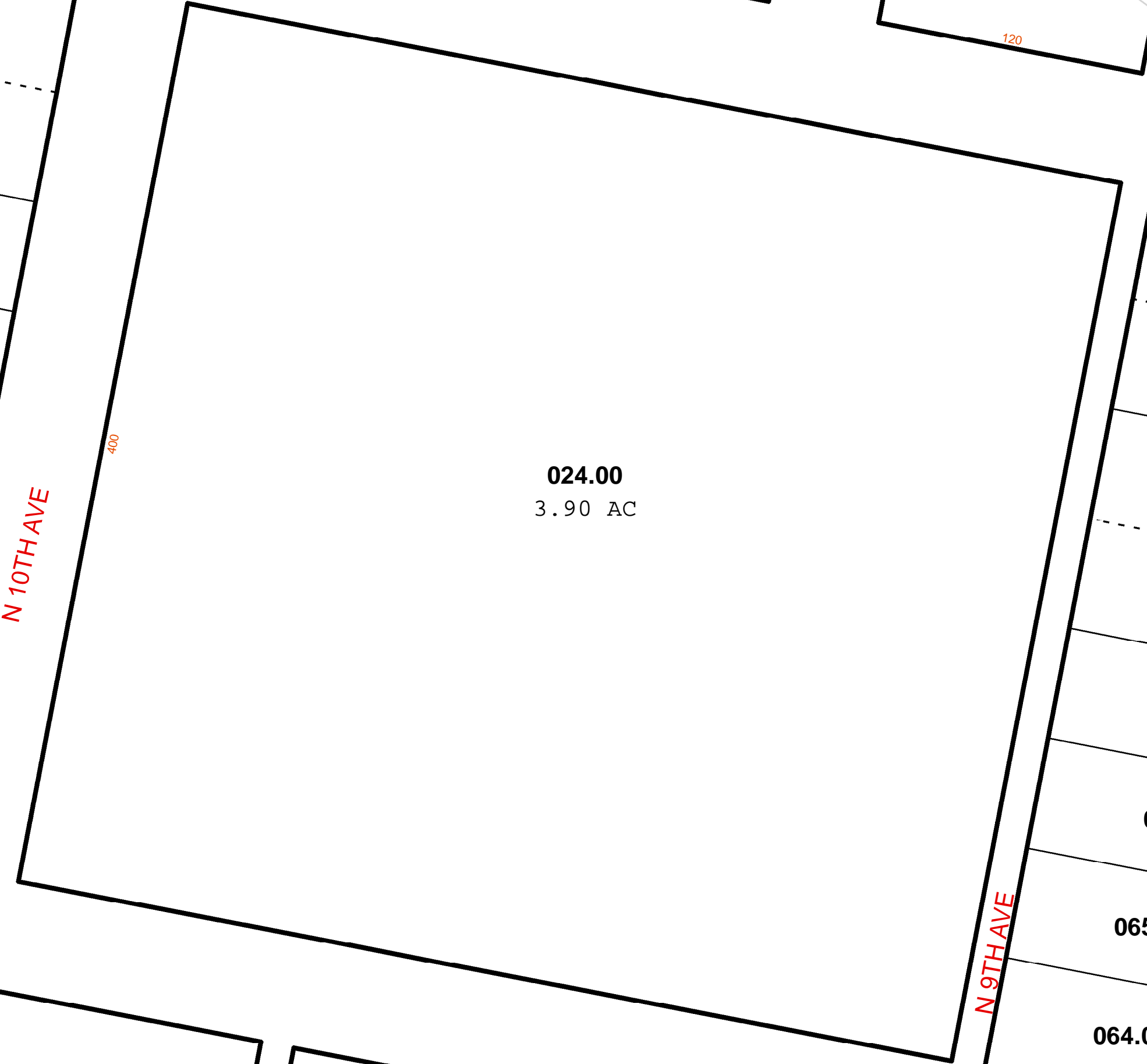
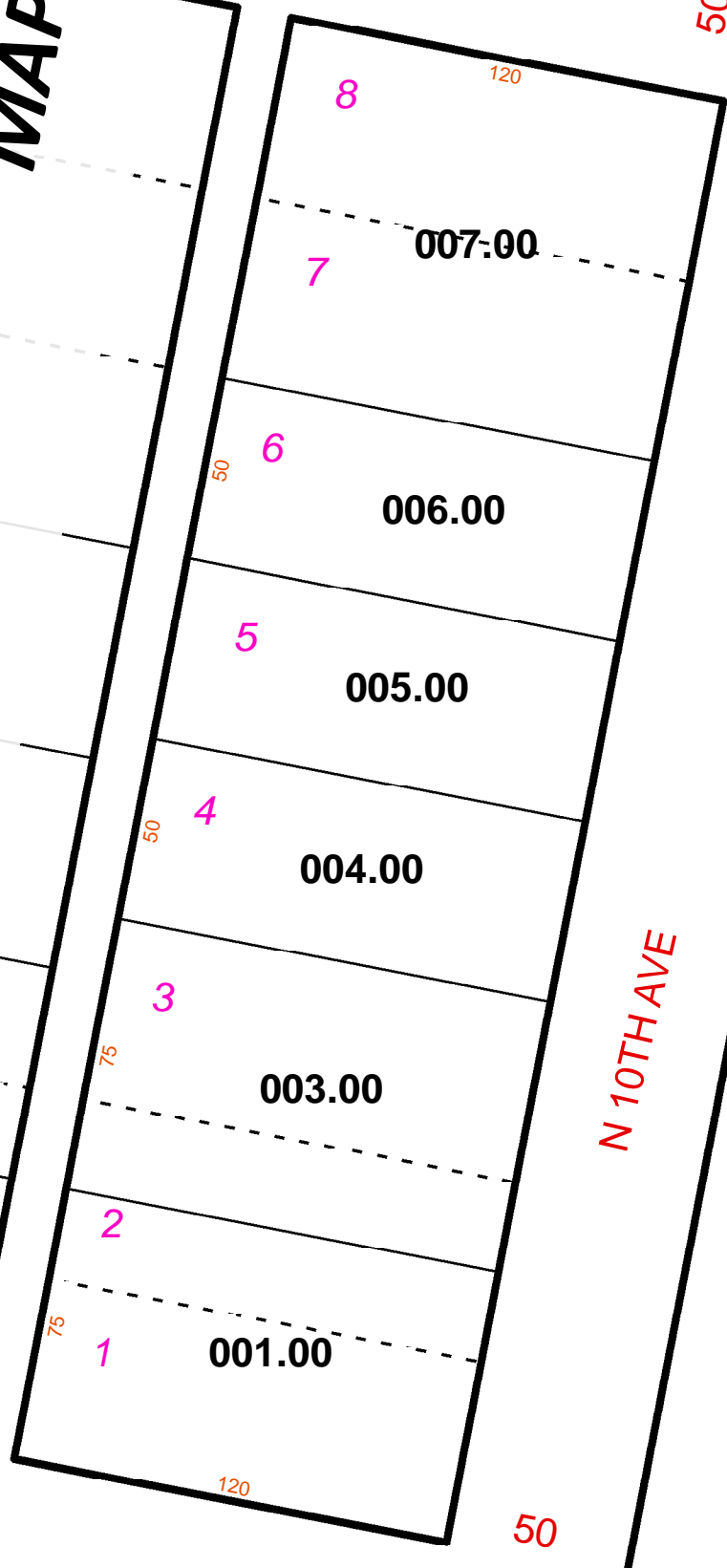
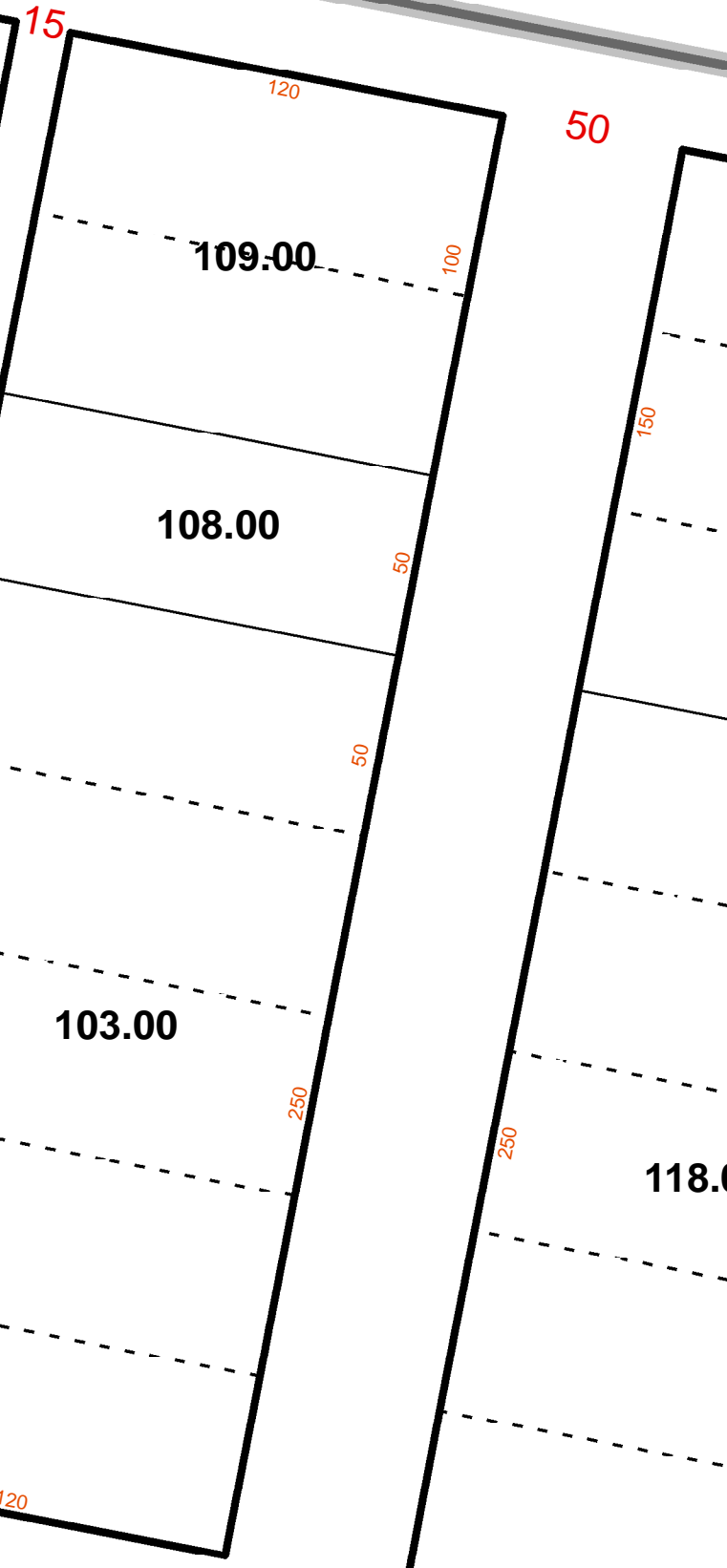
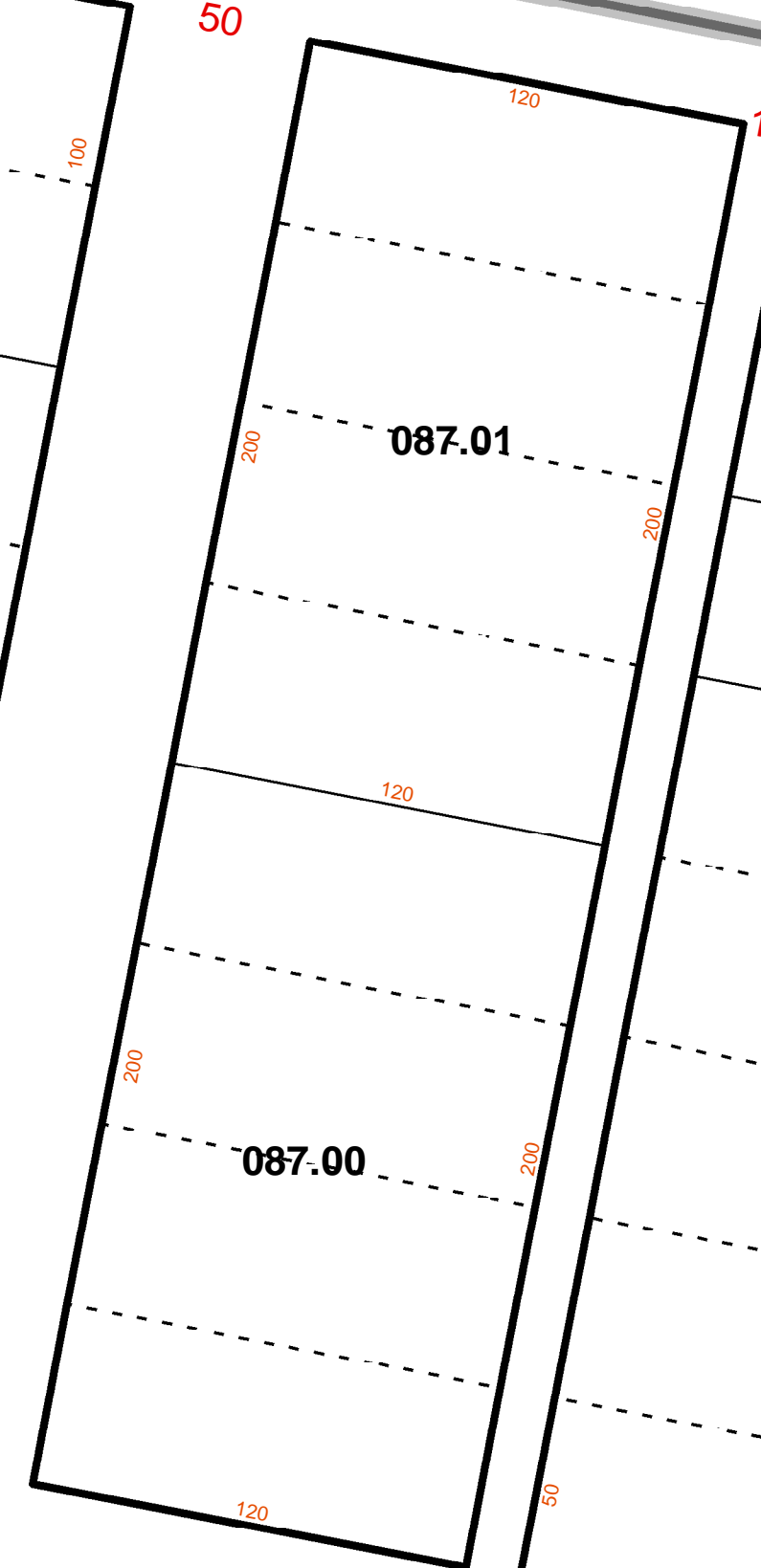
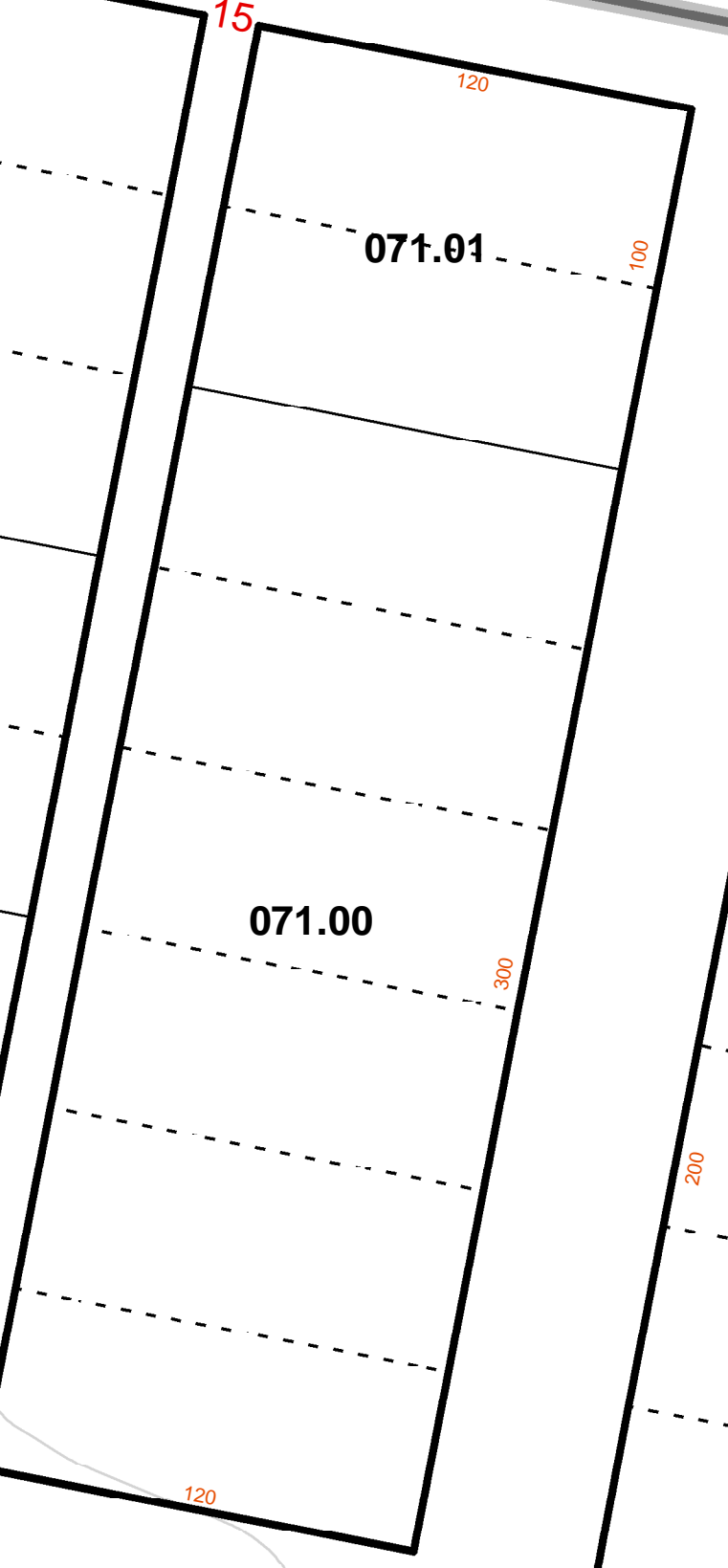
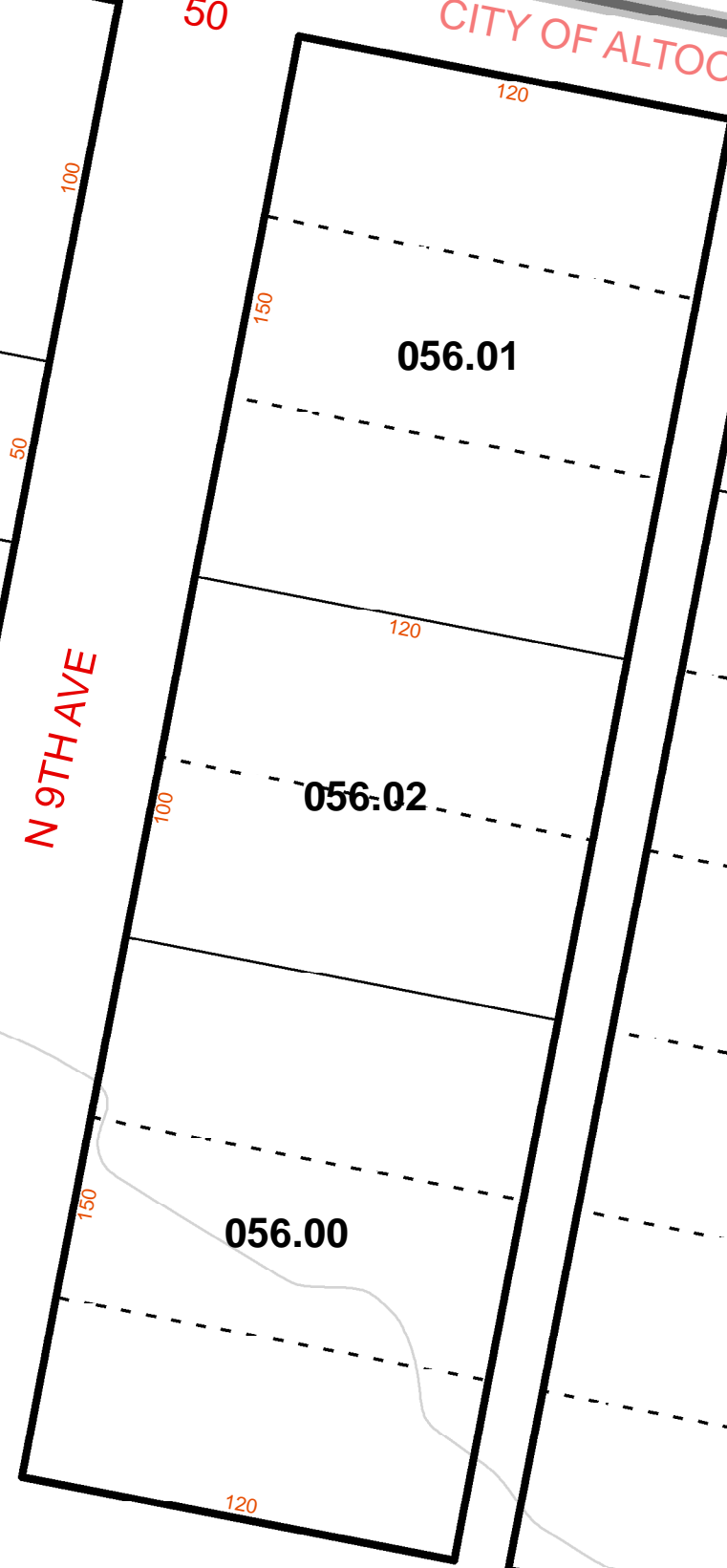
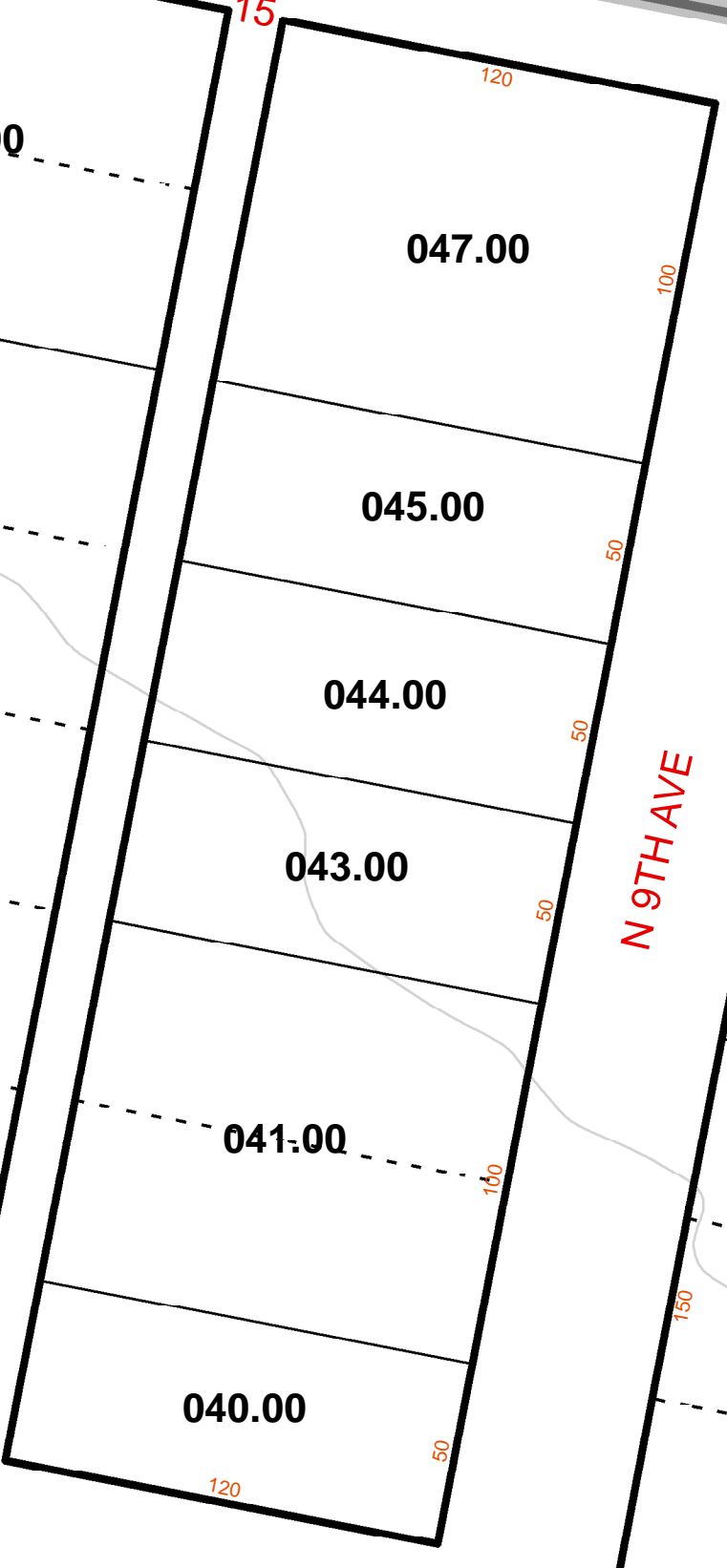
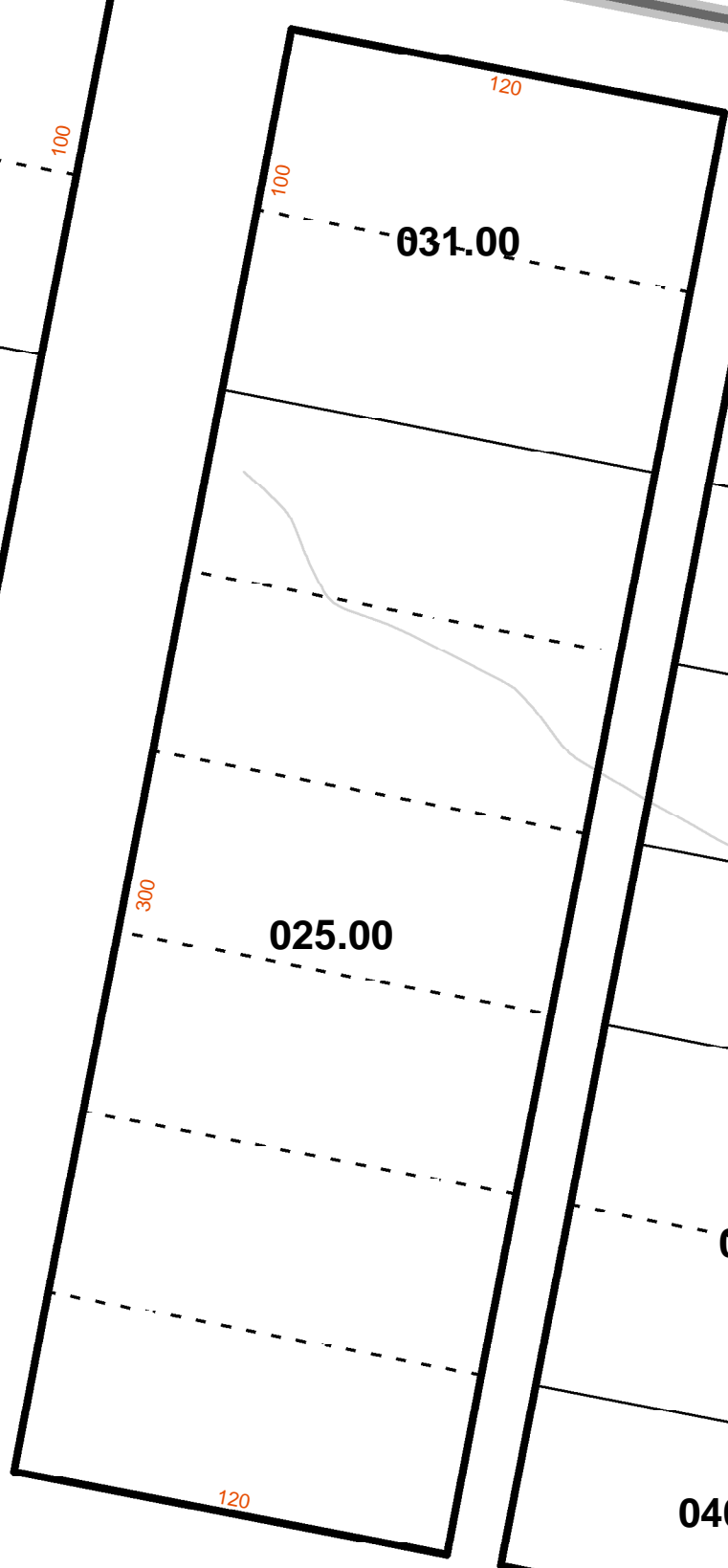
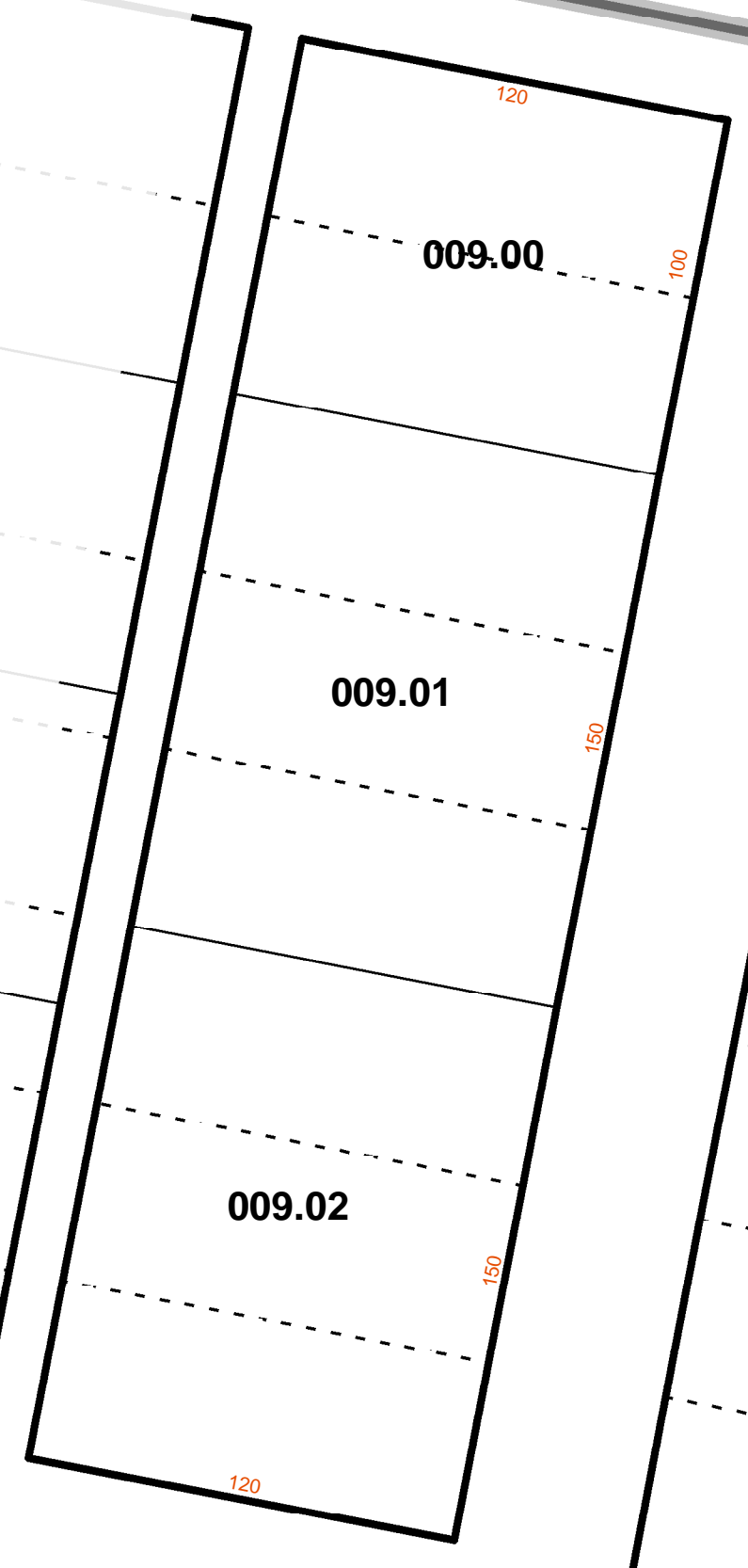
MAP 14.00-19A.

MAP 01.13-23..

MAP 01.13-22..

MAP 01.13-24..

MAP 01.13-36..

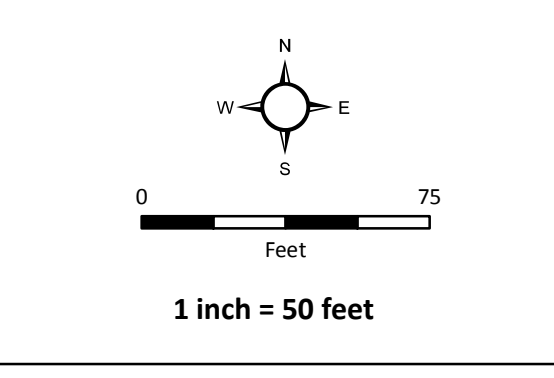


**ASSESSMENT MAP**  
County of Blair  
Pennsylvania  
Date Published: 7/8/2019

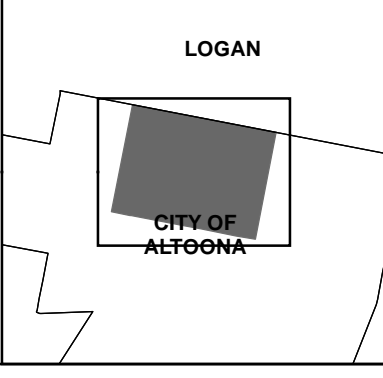
The County makes no guarantee or warranty to its accuracy as to labeling, dimensions, placement or location of any features contained herein. The boundaries depicted by this data are approximate, and are not necessarily accurate to surveying or engineering standards. This data is intended for informational purposes and should not be considered authoritative for engineering, navigational, legal and other site-specific uses.

Presented by:  
 Blair County Assessment Office  
423 Allegheny St, Suite 041  
Hollidaysburg, PA 16648

Prepared by:  
 Blair County GIS Department  
423 Allegheny St, Suite 011  
Hollidaysburg, PA 16648



- Road ROW
- Parcel Boundary
- Lot Lines
- Ward Boundary
- Municipal Boundary
- Sheet Parcels



REVISIONS	

CITY OF ALTOONA  
District: 01.13  
Map #: 25  
(01.13-25..)