

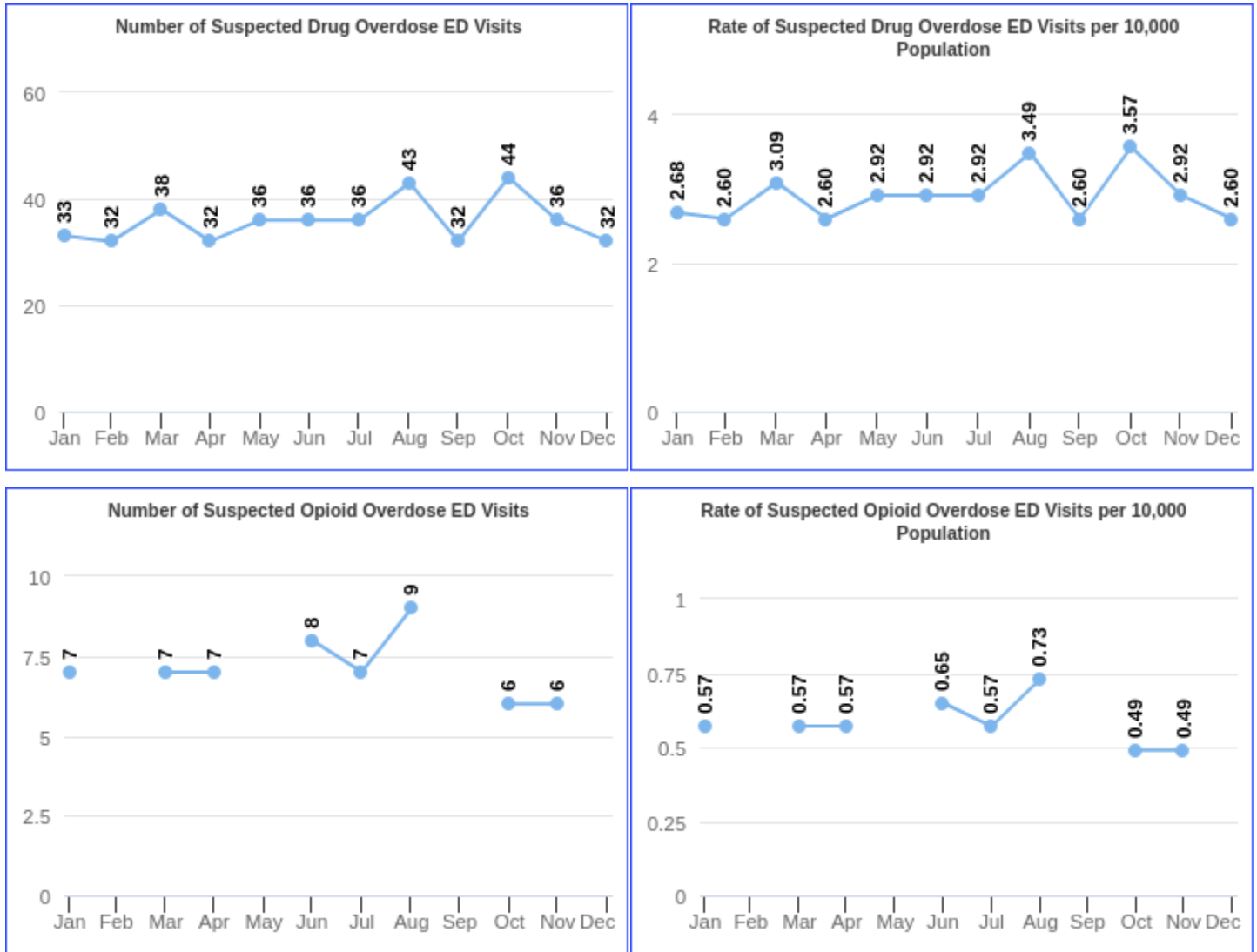
Quarterly Report on Overdose-Related Emergency Department Visits for Blair County Residents



Blair County

Suspected Drug Overdose in Blair County, Year-to-Date

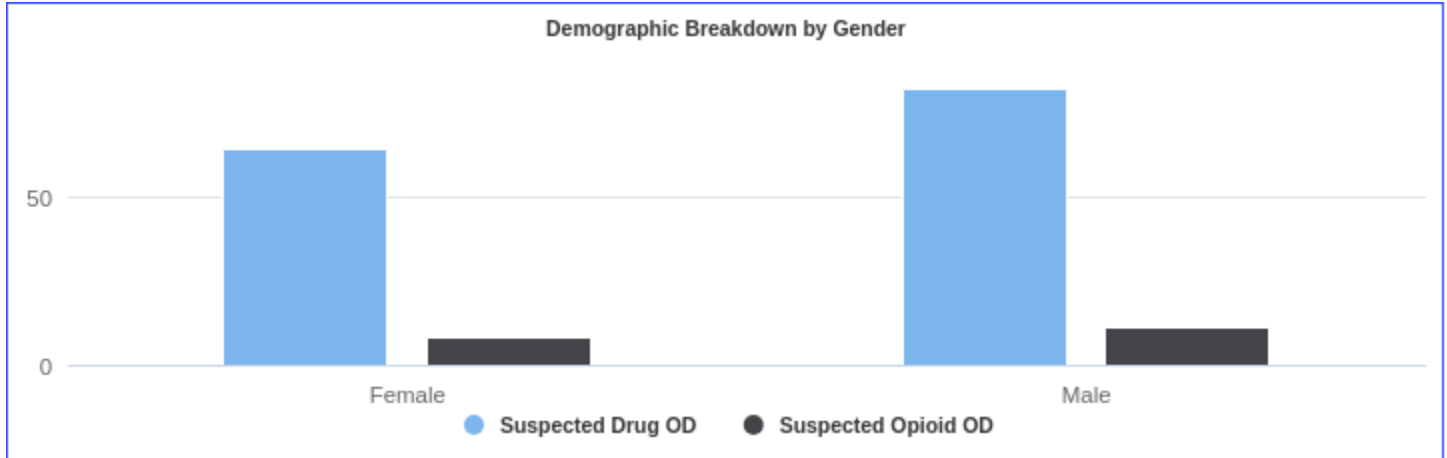
All charts show ED Visits in Blair County by Month, January 1, 2024 - December 31, 2024.



Blair County, through time periods January 1, 2024 - December 31, 2024. All data is based on patient's home location. In keeping with confidentiality regulations, numbers and rates are not disclosed for between one and four events. Where there are 20 or fewer All Cause Emergency Department Visits, rates are not calculated due to the instability of rates. These data are preliminary, and data quality and completeness may vary over time.

Demographic Breakdown Graphs in Blair County

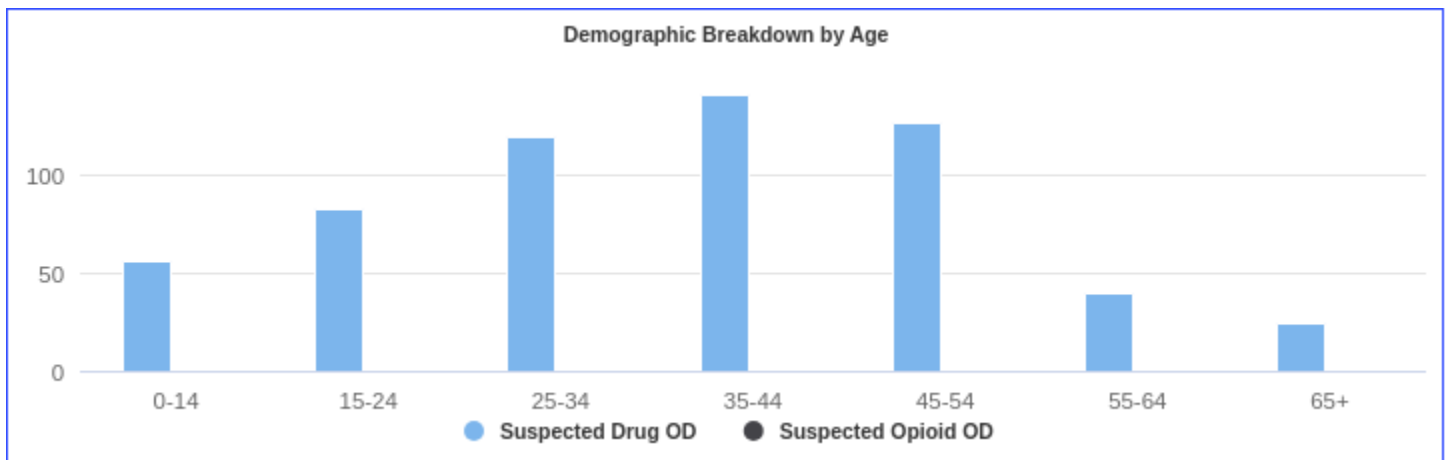
All charts show Rates of Suspected Drug and Opioid Overdose (OD) Emergency Department Visits in Blair County per 10,000 Visits, October 1, 2024 - December 31, 2024.



GENDER	SUSPECTED DRUG OD RATE (COUNT)	SUSPECTED OPIOID OD RATE (COUNT)
Female	64.6 (53)	8.5 (7)
Male	82.5 (59)	11.2 (8)

All data is based on patient's home location. In keeping with confidentiality regulations, numbers and rates are not disclosed for between one and four events ("a") and marked as "aa" when 5 or greater but suppressed to preserve censoring of an adjacent cell. Where there are 20 or fewer All Cause Emergency Department Visits, rates are not calculated due to the instability of rates ("b"). These data are preliminary, and data quality and completeness may vary over time.

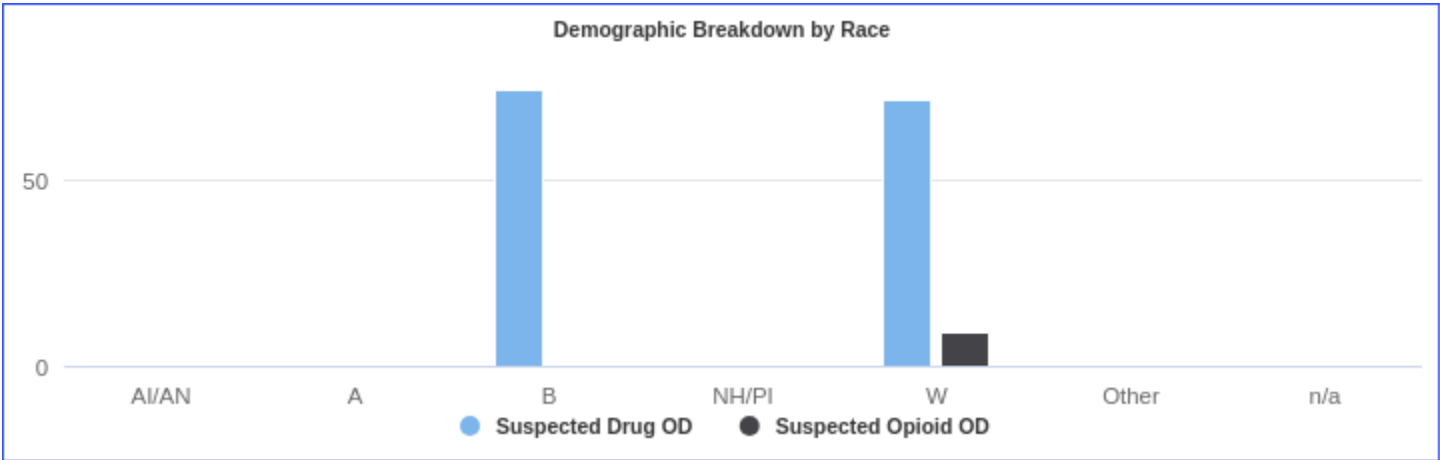
**Where noted, less than 80% of records had valid data points available. Caution should be used when interpreting these results.



AGE	SUSPECTED DRUG OD RATE (COUNT)	SUSPECTED OPIOID OD RATE (COUNT)
0-14	55.8 (10)	a
15-24	82.7 (14)	a
25-34	119.1 (22)	a
35-44	140.3 (26)	a
45-54	126.4 (21)	a
55-64	39.5 (8)	.0 (0)
65+	24.5 (11)	a

All data is based on patient's home location. In keeping with confidentiality regulations, numbers and rates are not disclosed for between one and four events ("a") and marked as "aa" when 5 or greater but suppressed to preserve censoring of an adjacent cell. Where there are 20 or fewer All Cause Emergency Department Visits, rates are not calculated due to the instability of rates ("b"). These data are preliminary, and data quality and completeness may vary over time.

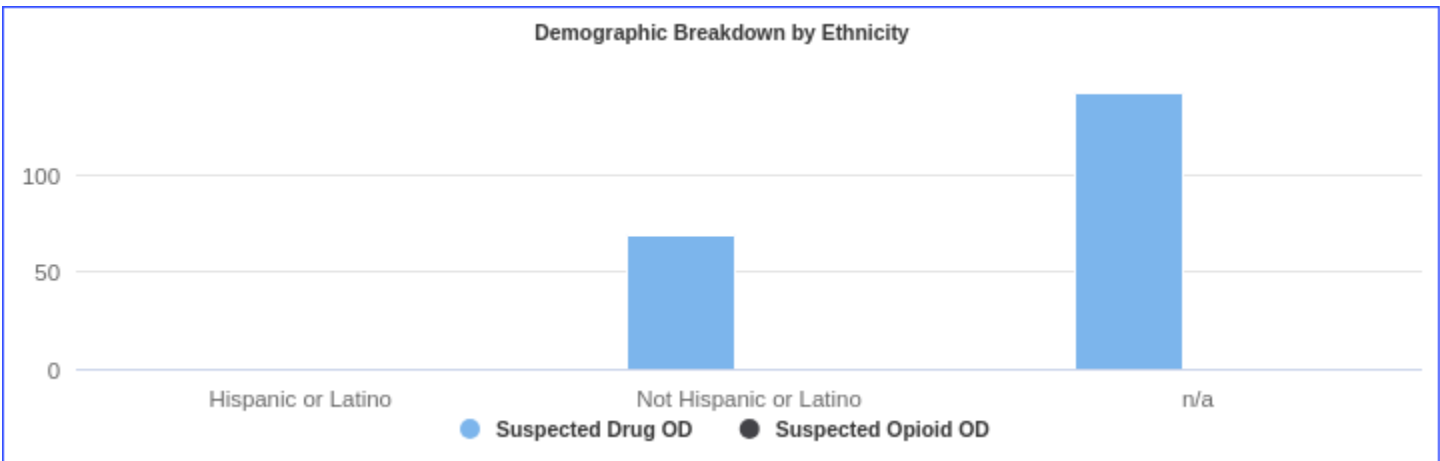
**Where noted, less than 80% of records had valid data points available. Caution should be used when interpreting these results.



RACE	SUSPECTED DRUG OD RATE (COUNT)	SUSPECTED OPIOID OD RATE (COUNT)
American Indian or Alaska Native (AI/AN)	.0 (0)	.0 (0)
Asian (A)	.0 (0)	.0 (0)
Black or African American (B)	74.2 (7)	a
Native Hawaiian or Other Pacific Islander (NH/PI)	b (0)	b (0)
White (W)	71.6 (101)	9.2 (13)
Other	a	.0 (0)
n/a	a	a

All data is based on patient's home location. In keeping with confidentiality regulations, numbers and rates are not disclosed for between one and four events ("a") and marked as "aa" when 5 or greater but suppressed to preserve censoring of an adjacent cell. Where there are 20 or fewer All Cause Emergency Department Visits, rates are not calculated due to the instability of rates ("b"). These data are preliminary, and data quality and completeness may vary over time.

**Where noted, less than 80% of records had valid data points available. Caution should be used when interpreting these results.



ETHNICITY	SUSPECTED DRUG OD RATE (COUNT)	SUSPECTED OPIOID OD RATE (COUNT)
Hispanic or Latino	.0 (0)	.0 (0)
Not Hispanic or Latino	69.2 (99)	aa
n/a	141.9 (13)	a

All data is based on patient's home location. In keeping with confidentiality regulations, numbers and rates are not disclosed for between one and four events ("a") and marked as "aa" when 5 or greater but suppressed to preserve censoring of an adjacent cell. Where there are 20 or fewer All Cause Emergency Department Visits, rates are not calculated due to the instability of rates ("b"). These data are preliminary, and data quality and completeness may vary over time.

**Where noted, less than 80% of records had valid data points available. Caution should be used when interpreting these results.